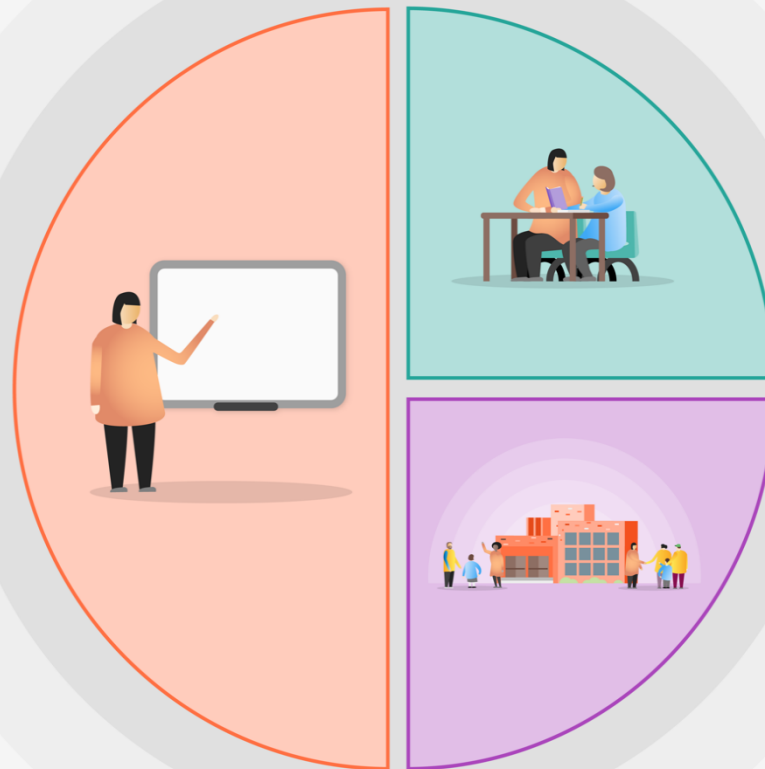




1 Teaching

- Quality First Teaching supported by evidence based CPD.
- Thorough use of assessment to inform planning and close gaps.
- Focus on basic skills of reading, writing and maths
- Embed whole class reading strategies and promote a love of reading across the school
- CPD and PM to enhance the quality of teaching and learning. Regularly monitor outcomes and quality of implementation.
- Allow time for subject leaders to develop a broad and engaging curriculum.
- Embed growth mindset and self-regulation strategies so pupils can regulate learning behaviours.



2 Targeted academic support

- TA led phonics, reading and maths interventions and small group support.
- TA support for vulnerable pupils to enable children to 'keep up' rather than 'catch up'
- Teacher led interventions based on gap analysis and needs of individual pupil.
- Reading for pleasure discussion sessions

3 Wider strategies

- Use of outdoor environment to extend learning provision.
- Development of a shared language promoting vision and values to promote spirituality.
- Support and develop extra-curricular opportunities.
- Organise visits away from school and visitors in to engage children in life beyond school
- Sustain weekly communications between home and school via the newsletter, Class Dojo and Texting service.

God is Love, so we Learn to Love; Love to Learn; Learn for Life